

# 13-24 JUNE 2016 THE 8TH INTERNATIONAL SIBERIAN EARLY CAREER GEOSCIENTISTS CONFERENCE

NOVOSIBIRSK



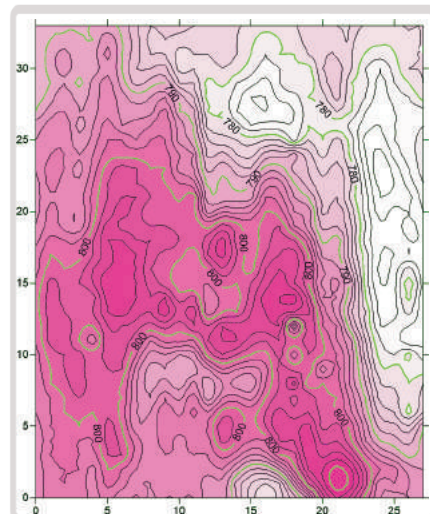
V.S. Sobolev Institute of Geology and Mineralogy SB RAS  
A.A. Trofimuk Institute of Petroleum Geology and Geophysics SB RAS  
Novosibirsk State University

## *Shallow geophysical surveying in the Novosibirsk region*



### PROGRAM of field camp

18 – 24 June 2016



**SEG**  
[www.segweb.org](http://www.segweb.org)

**SGA**  
[www.e-sga.org](http://www.e-sga.org)



GIS SOFTWARE DEVELOPMENT  
**DATA EAST**







## GENERAL INFORMATION

The field geophysical camp is aimed at young geoscientists wishing to get closer acquainted with diverse geophysical techniques and take direct part in state-of-the-art equipment measurements. A presumable set of methods and tools includes the vertical electric sounding, electric profiling, transient electromagnetic sounding, magnetotelluric sounding, ground-penetrating radar, electromagnetic scanner, magnetic survey.

The targets of research are located in the neighborhood of Akademgorodok and the Novosibirsk region. We plan to visit several geophysical observatories, as well as the Scientific Production Enterprise of Geophysical Equipment "Looch".

Apart from everything else, the field camp affords a unique opportunity for sharing experiences, informal socializing and making new acquaintances.

### Expected weather conditions:

Sunny and mild during the daytime (15-25°C), moderately warm at night (10-15°C), rare rains.

### Technical managers:

Igor Mikhaylov ([mikhayloviv@ipgg.sbras.ru](mailto:mikhayloviv@ipgg.sbras.ru)), Timofey Eltsov.

### Date:

18-24 June 2016.

### Cost:

8000 RUB (\$140), including accommodation in the Bystrovka field test site, transportation, meals, logistical support. The final cost may be changed depending on the number of participants.

### Max./Min. number of participants:

25/15.





# 13-24 JUNE 2016 THE 8TH INTERNATIONAL SIBERIAN EARLY CAREER GEOSCIENTISTS CONFERENCE

NOVOSIBIRSK



## PRELIMINARY PROGRAM

### Day 1 (June 18, 2016)

**9:00 a.m.** – departure from Akademgorodok to the excursion in the territory of the Scientific Production Enterprise of Geophysical Equipment “Looch”.

**1:00 p.m.** – dinner.

**3:00 p.m.** – Klyuchi testing facility: familiarization with the electromagnetic scanner, conducting measurements to search for metal objects.

**5:30 p.m.** – excursion to the ionospheric and earthquake detection stations.

**7:00 p.m.** – return to Akademgorodok.

### Day 2 (June 19, 2016)

**9:00 a.m.** – departure from Akademgorodok to the Bystrovka field test site.

**11:00 a.m.** – accommodation.

**1:00 p.m.** – dinner.

**2:00 p.m.** – excursion to the 40- and 100-ton seismic vibrators and the seismological station.

**6:00 p.m.** – supper, cinema performance.

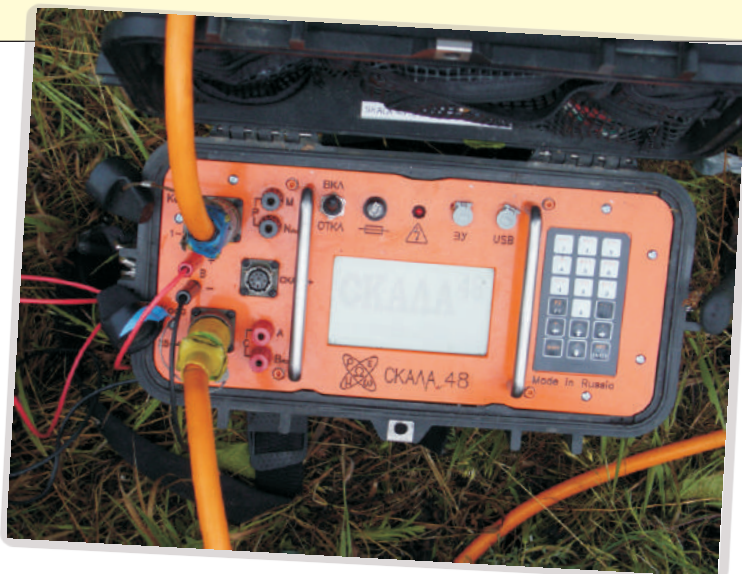
### Day 3 (June 20, 2016)

**9:00 a.m.** – magnetotelluric sounding: lecture on the principles of the method, measuring equipment installation.

**1:00 p.m.** – dinner.

**2:00 p.m.** – magnetometry: introductory lecture, measurements with proton magnetometers.

**7:00 p.m.** – supper, socializing.





# 13-24 JUNE 2016 THE 8TH INTERNATIONAL SIBERIAN EARLY CAREER GEOSCIENTISTS CONFERENCE

NOVOSIBIRSK



## PRELIMINARY PROGRAM

### Day 4 (June 21, 2016)

9:00 a.m. – magnetotelluric sounding data reading, processing and interpretation.

1:00 p.m. – dinner.

2:00 p.m. – ground-penetrating radar survey: introductory lecture, measurements, data processing and interpretation.

7:00 p.m. – supper, socializing.

### Day 5 (June 22, 2016)

9:00 a.m. – vertical electric sounding, electric profiling: introductory lectures, conducting measurements.

2:00 p.m. – processing and interpreting vertical electric sounding and electric profiling data.

7:00 p.m. – supper, socializing.

### Day 6 (June 23, 2016)

9:00 a.m. – near-field transient electromagnetic sounding: introductory lecture.

2:00 p.m. – in-situ measurements.

7:00 p.m. – supper, cinema performance.

### Day 7 (June 24, 2016)

9:00 a.m. – near-field transient electromagnetic sounding data processing and interpretation.

2:00 p.m. – field camp closure.

5:00 p.m. – departure to Akademgorodok.

